

National Cycle Network Route 403 Information Board

1. Background

National Cycle Network Route 403 is a 42-mile route that links Melksham, Chippenham, Calne and Marlborough. It passes through Calne Without in two sections:

- To the west of Calne, where the route follows the old Chippenham to Calne railway line.
- To the east of Calne, where the route follows Low Lane, goes through the Hills landfill site, and, from there along country lanes to Cherhill and on to Yatesbury and Avebury.

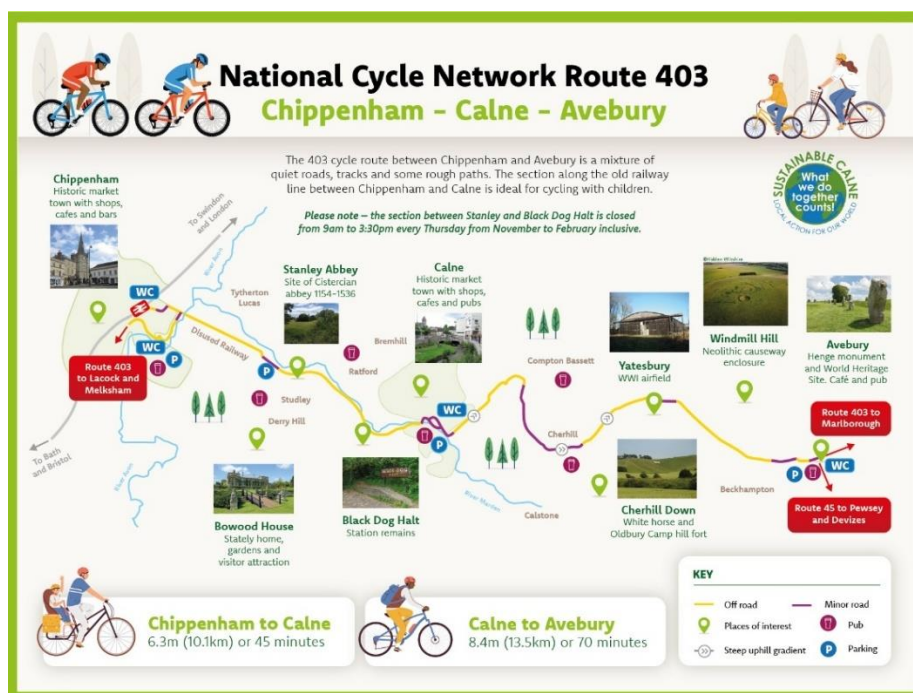
The Council is part of a Working Group comprising representatives from Calne Without Parish Council, Cherhill Parish Council, Calne Town Council, Bremhill Parish Council, Chippenham Town Council, Wiltshire Council, Cycle Chippenham, Sustainable Calne and Sustrans.

The Working Group was established in 2022 to “preserve and enhance the 403 Sustrans Route between Chippenham and Avebury as a multi-user route for active travel and leisure, well-being and commuting purposes, and to promote its use to, and care by, the local community.”

Over the past three years, the Group has undertaken improvements to signage, got part of the route to the east of Yatesbury diverted onto a better path, undertaken improvements to surfacing, got overgrowth cut back and removed barriers along the route.

2. Proposal

As part of its commitment to promote its use to the community, the Working Group has developed artwork for an information board to be installed at key points along the route, to promote its use and raise awareness:



(Final artwork to include the Parish Council’s logo, alongside that of Sustainable Calne, who paid for the graphic design work.)

The proposed location of the Information Board would be at the entrance to the car-park off Studley Lane, alongside the NCN decorated sculpture (What3Words: ///studs.blip.paddlers):



Permission for the Board has been provided by the leaseholder, Wiltshire Council, who have also offered to help with the installation.

It is proposed that the Information Board would be a twin-leg lectern style, A1 size (594 x 841mm) and made in recycled plastic for longevity. The example provided is available from Fitzpatrick Woolmer (<https://www.fwdp.co.uk/>), who have been used previously by Calne Town Council.



3. Estimated Cost

The estimated cost would be:

Material	Cost (excl. VAT)	Cost (incl. VAT)	Supplier & Comments
Supply of A1 size twin-leg recycled plastic lectern, including checking artwork, graphic panel, lectern stand and delivery	£1,310	£1,572	Fitzpatrick Woolmer
Two x 20kg bags of Postcrete	£10.82	£12.98	Screwfix
Total	£1,320.82	£1,584.98	

4. Recommendation

It is recommended that the Council authorises a budget of £1,321.00 to procure and install a Route 403 Information Board in the car-park off Studley Lane.

Cllr John Barnes,
 Route 403 Working Group Representative