

Speed Indicator Devices Request for Installation of Sockets for Removable Posts

1. Background

In April, Wiltshire Council issued a revised Practice Note governing the deployment of Speed Indicator Devices (SIDs).

This guidance details the criteria for the deployment of SIDs, which is summarised below:

- SIDs may be deployed at sites for periods of between two and eight weeks.
- SIDs may only be deployed on roads subject to 20, 30 and 40mph speed limits.
- SIDs must not be positioned within 100m of speed limit terminal points except in exceptional circumstances such as reduced visibility or proximity of side junctions.
- SIDs may only be deployed at sites where a speed survey has demonstrated an 85thile speed in excess of the following thresholds:
 - 20mph speed limit: 85thile \geq 24.0mph
 - 30mph speed limit: 85thile \geq 35.0mph
 - 40mph speed limit: 85thile \geq 46.0mph
- SIDs must be mounted at a minimum height of 2.0m above ground level in verge areas and 2.4m in footway and cycleways. Devices must have a minimum edge clearance of 450mm and cannot be fixed to telegraph poles or concrete street lighting columns.

(In addition to the above, the training course sensibly advises a clear line of sight for oncoming vehicles of 60m in 20/30mph speed limits, and 75m in 40mph speed limits.)

SIDs may be mounted on existing posts (as long as road signage is not obscured), or on existing (non-concrete) lighting columns, subject to approval from Wiltshire Council.

Wiltshire Council's preferred method of mounting SIDs is using dedicated removable posts. These must be fixed via a socketed ground anchor to enable removal, such as the following example: <https://nal.ltd.uk/products/retention-sockets/non-illuminated>. The installation of sockets for removable posts may be requested via the area Local Highways and Footpaths Improvement Group (LHFIG).

The purpose of this paper is to seek approval from the Council to request post sockets to be installed at the locations detailed below, to support the ongoing deployment of the Council's Speed Indicator Devices.

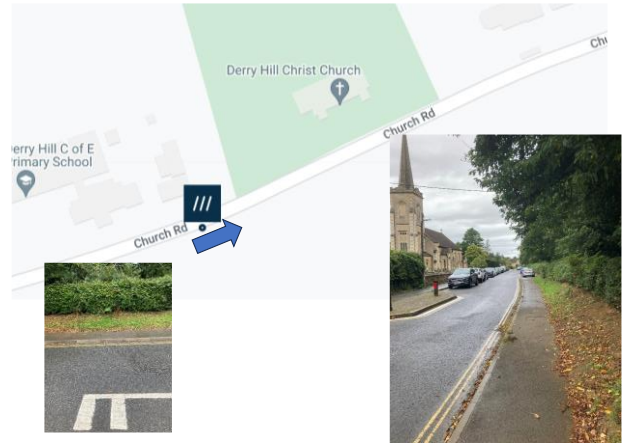
2. Proposed Locations

The following locations are proposed for the installation of ground-anchored post sockets. These locations were reviewed and endorsed by the Council's Highways, Transport and Road Safety Working Group on 20th September 2023.

Location 1 – Church Road, Derry Hill – Westbound

Position – on inside of pavement at What3Words location `///clipboard.drifters.dates`

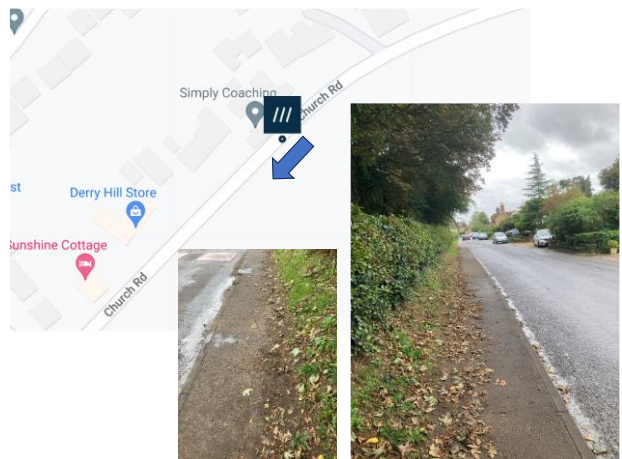
Criteria	Comment
Speed Limit	20mph
Date of Speed Survey	Feb 2020
Speed Survey 85%ile	27.9mph v threshold of 24.0mph
Distance to terminal point	> 100m
Line of Sight	> 60m



Location 2 – Church Road, Derry Hill – Eastbound

Position – on inside of pavement at What3Words location [///fighters.jubilant.defaults](https://www.what3words.com/#!/fighters.jubilant.defaults)

Criteria	Comment
Speed Limit	20mph
Date of Speed Survey	Feb 2020
Speed Survey 85%ile	27.9mph v threshold of 24.0mph
Distance to terminal point	> 100m
Line of Sight	> 60m



Location 3 – Stockley Lane – Bi-directional

Position – on inside of verge by gateway at What3Words location [///curries.chimp.pronouns](https://www.what3words.com/#!/curries.chimp.pronouns)

Criteria	Comment
Speed Limit	30mph
Date of Speed Survey	Jan 2022
Speed Survey 85%ile	38.05.9mph v threshold of 35.0mph
Distance to terminal point	> 100m
Line of Sight	> 60m



Note: this location has been selected as it has a clear line of sight in both directions.

Location 4 – Sandy Lane - Southbound

Position – on inside of pavement before bus stop at What3Words location `///fists.ruins.softly`

Criteria	Comment
Speed Limit	30mph
Date of Speed Survey	Jan 2022
Speed Survey 85%ile	36.67mph v threshold of 35.0mph
Distance to terminal point	> 100m
Line of Sight	> 60m



Note: for northbound traffic, SIDs may be deployed on the reverse of a road sign at `///polices.hormones.herb` as used in previous deployments.

Location 5 – Devizes Road - Northbound

Position – in verge by gateway, just before exit from Bowood, at What3Words location `///testers.slouched.views`

Criteria	Comment
Speed Limit	40mph
Date of Speed Survey	2017
Speed Survey 85%ile	52.1mph v threshold of 46.0mph
Distance to terminal point	> 100m
Line of Sight	> 75m



3. Recommendation

It is recommended that the Council submits a request to Calne Area LHFIG for the installation of ground-anchored sockets to support the deployment of the Council's Speed Indicator Devices on removable posts.

Cllr John Barnes
 Highways, Transport & Road Safety Working Group