



# Calne Without Parish Council Thermal Imaging Camera Loan Scheme

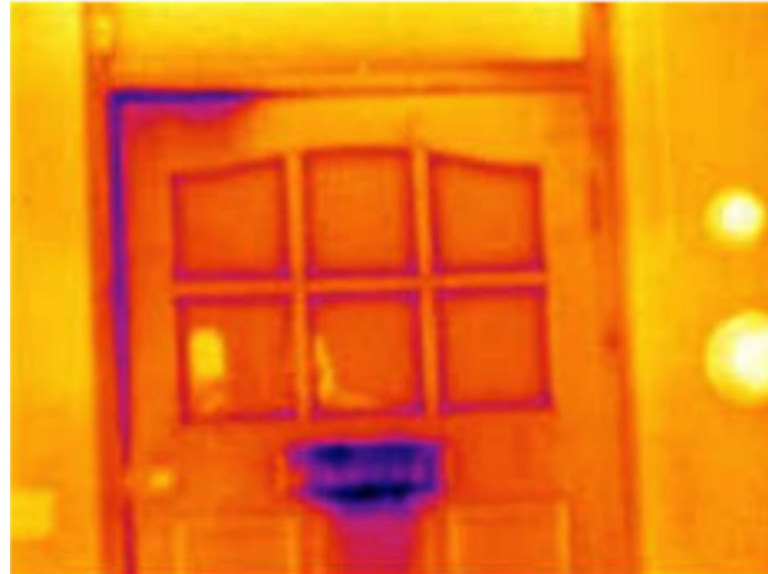
# Common Heat Loss Problems

## Doors



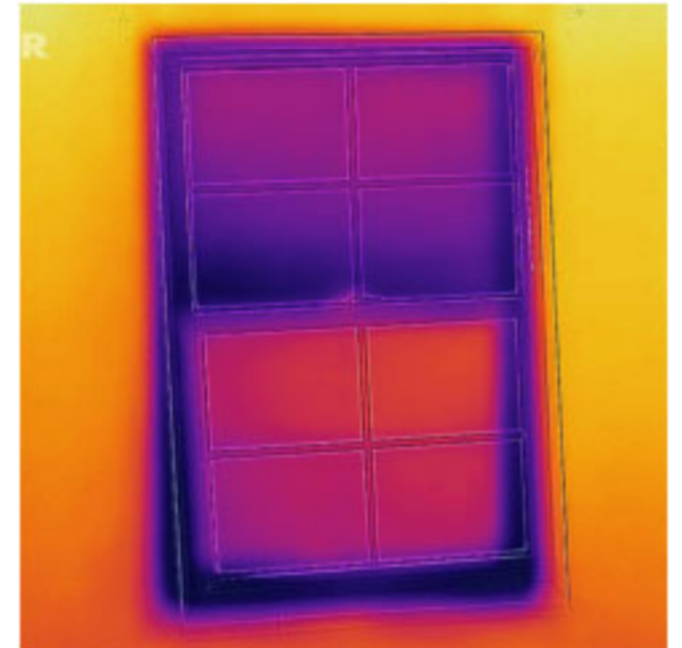
Draught excluders;  
internal curtains; cushion  
draft excluder

## Letter Boxes



Letter box brushes or  
flaps.

## Windows



Draught proofing strips;  
silicone sealant;  
secondary glazing  
insulation film; magnetic  
strip secondary glazing

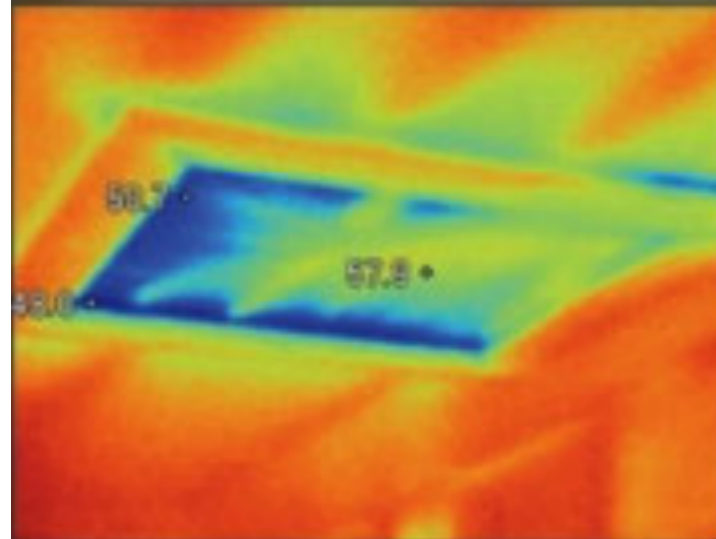
# Common Heat Loss Problems

## Attics



Loft insulation; spray foam insulation.

## Attic hatches



Insulation board; draught proofing strips.

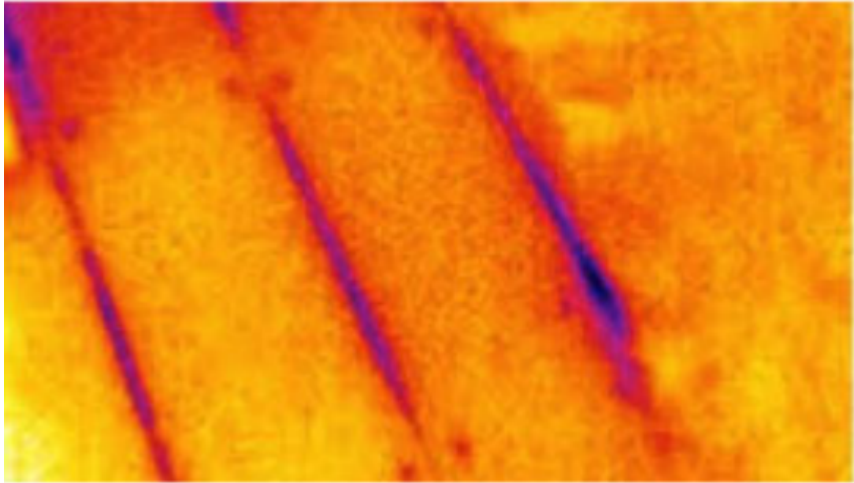
## Unused open fireplaces



Chimney balloon; removable fire place guard.

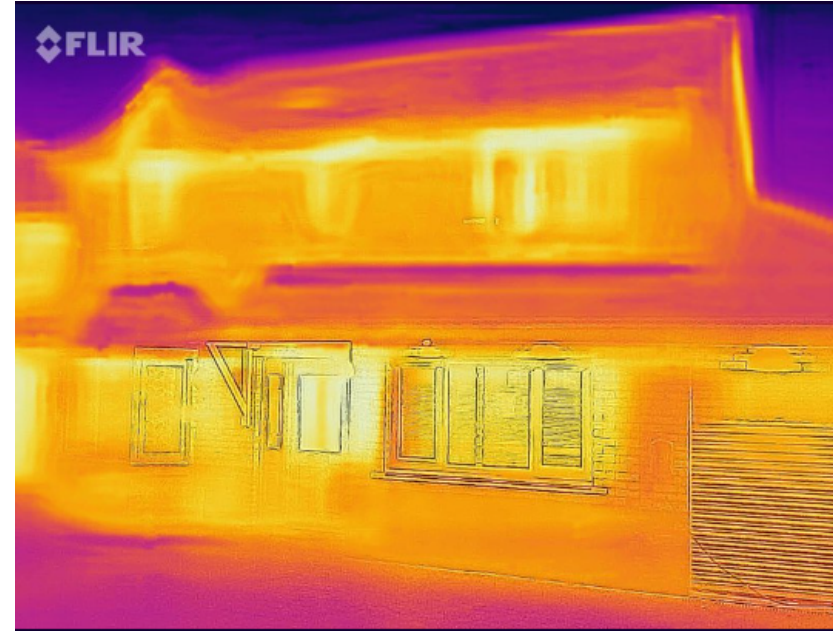
# Common Heat Loss Problems

## Ground floor



Underfloor insulation; floorboard v-shaped draught excluder; rugs.

## Walls

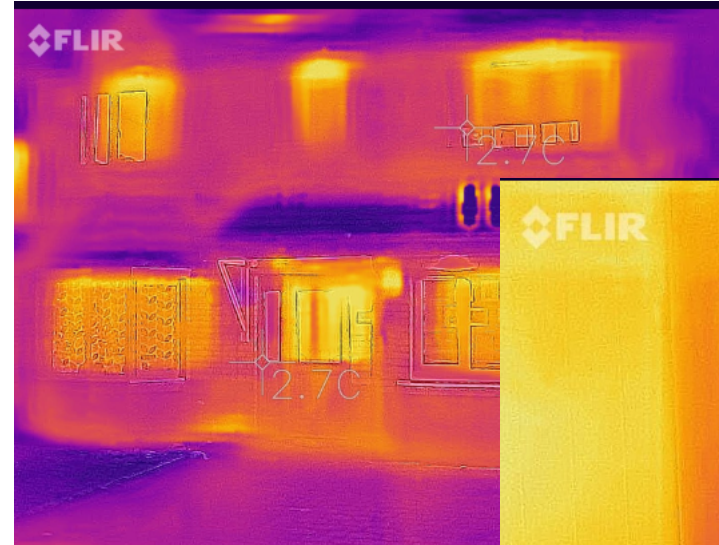


Cavity wall insulation; external or internal wall insulation.

# How will a Thermal Imaging Camera help?

A thermal imaging camera will enable people to identify areas of heat loss.

From **outside** the home, reds, whites, and warmer colours show where heat is leaking out.



From **inside** your home, darker, cooler spots show where cool air is coming in.

To be effective the outside temperature needs to be below **10°C**. This effectively limits the operating season to October through to March.



# CWPC's Thermal Imaging Cameras

We have invested in two FLIR-One Thermal Imaging Cameras. The devices attach to Smartphones – one device is iOS compatible and one is Android compatible.

- Cost effective device, providing balance between price & utility.
- Ranks highly on consumer sites.
- Used by Octopus Energy for their loan scheme.
- Linkage to Smartphone enables users to easily capture records from home surveys.
- The device comes with a free App which delineates features on the view.



The Loan Scheme is being offered as a **free** service to residents of Calne Without Parish.

# How the Scheme will work.

Contact the Device Controller, Cllr John Barnes, at [john.barnes@calnewwithout-pc.gov.uk](mailto:john.barnes@calnewwithout-pc.gov.uk) (Or sign up at the CWPC stall in the main hall.) Specify if you need the Android or iOS Apple compatible camera.

The Device Controller will contact you and agree a hire date and collection and return time.

Collect camera, pay small, refundable cash deposit and agree to the hire terms.

Use and return camera.

Provide feedback on issues identified and planned actions.

***Note – the Parish Council will not provide advice on insulation measures. All decisions taken and measures applied will be entirely at the user's own risk.***